



STARK WIE EIN STIER

RHOMBOID FAÇADE TILE 44 x 44 (PREFA)

CAD DETAILS

CONTENTS:

TIMBER SUB-STRUCTURE FRAMEWORK

- 2 detailed view – line spacing
- 3 vertical cross-section – structure
- 4 vertical cross-section – bottom connection
- 5 horizontal cross-section – external corner
- 6 horizontal cross-section – internal corner
- 7 vertical cross-section – window ledge
- 8 horizontal cross-section – window reveals
- 9 vertical cross-section – window lintel
- 10 vertical cross-section – top connection
- 11 vertical cross-section – roof parapet

ALUMINIUM SUB-STRUCTURE FRAMEWORK

- 12 vertical cross-section – structure
- 13 vertical cross-section – bottom connection
- 14 horizontal cross-section – external corner
- 15 horizontal cross-section – internal corner
- 16 vertical cross-section – window ledge
- 17 horizontal cross-section – window reveals
- 18 vertical cross-section – window lintel
- 19 vertical cross-section – top connection
- 20 vertical cross-section – roof parapet

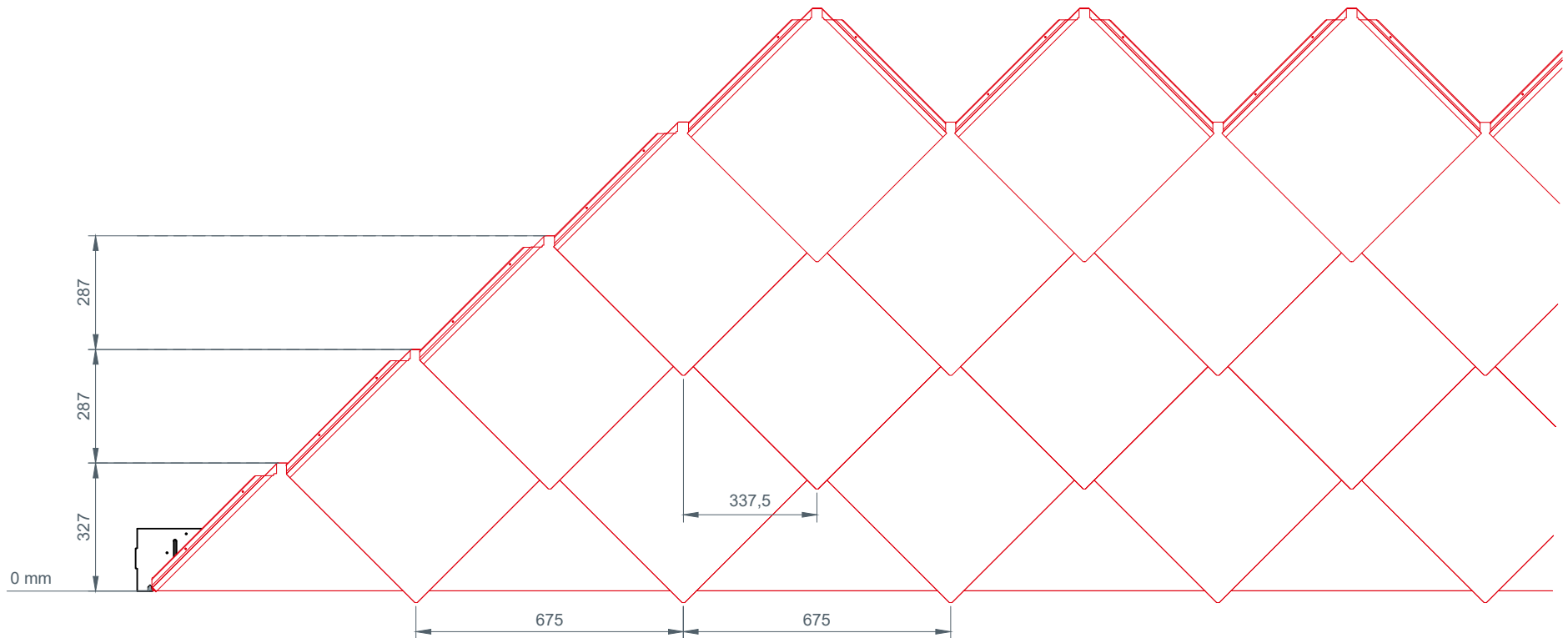


STARK WIE EIN STIER

line spacing
detailed view

RHOMBOID FAÇADE TILE 44 x 44 (PREFA)

CAD DETAILS

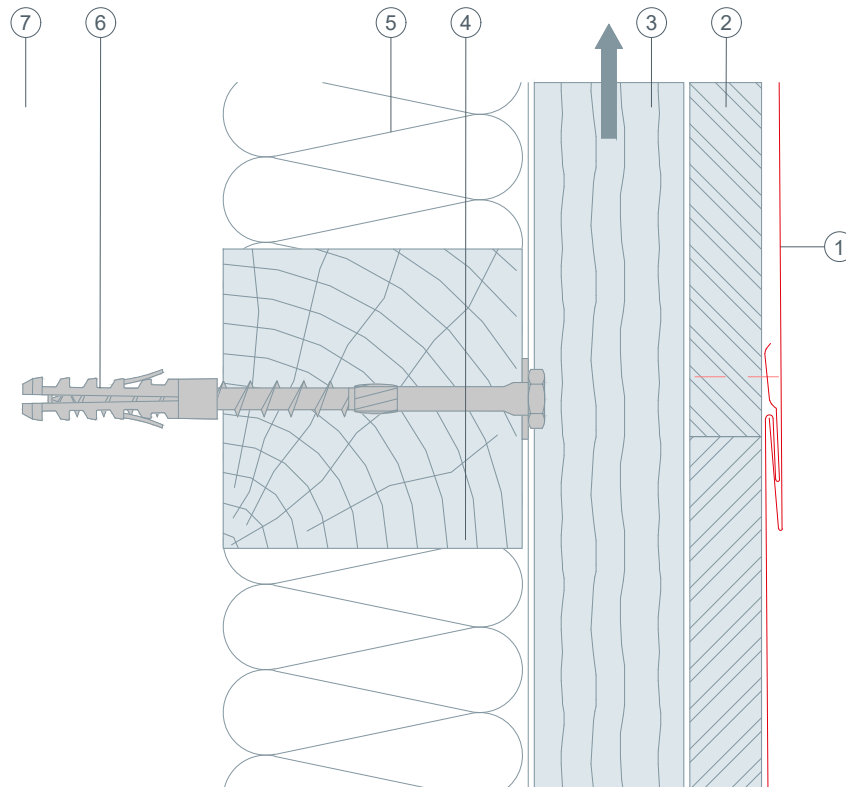




STARK WIE EIN STIER

structure vertical cross-section RHOMBOID FAÇADE TILE 44 x 44 (PREFA)

CAD DETAILS



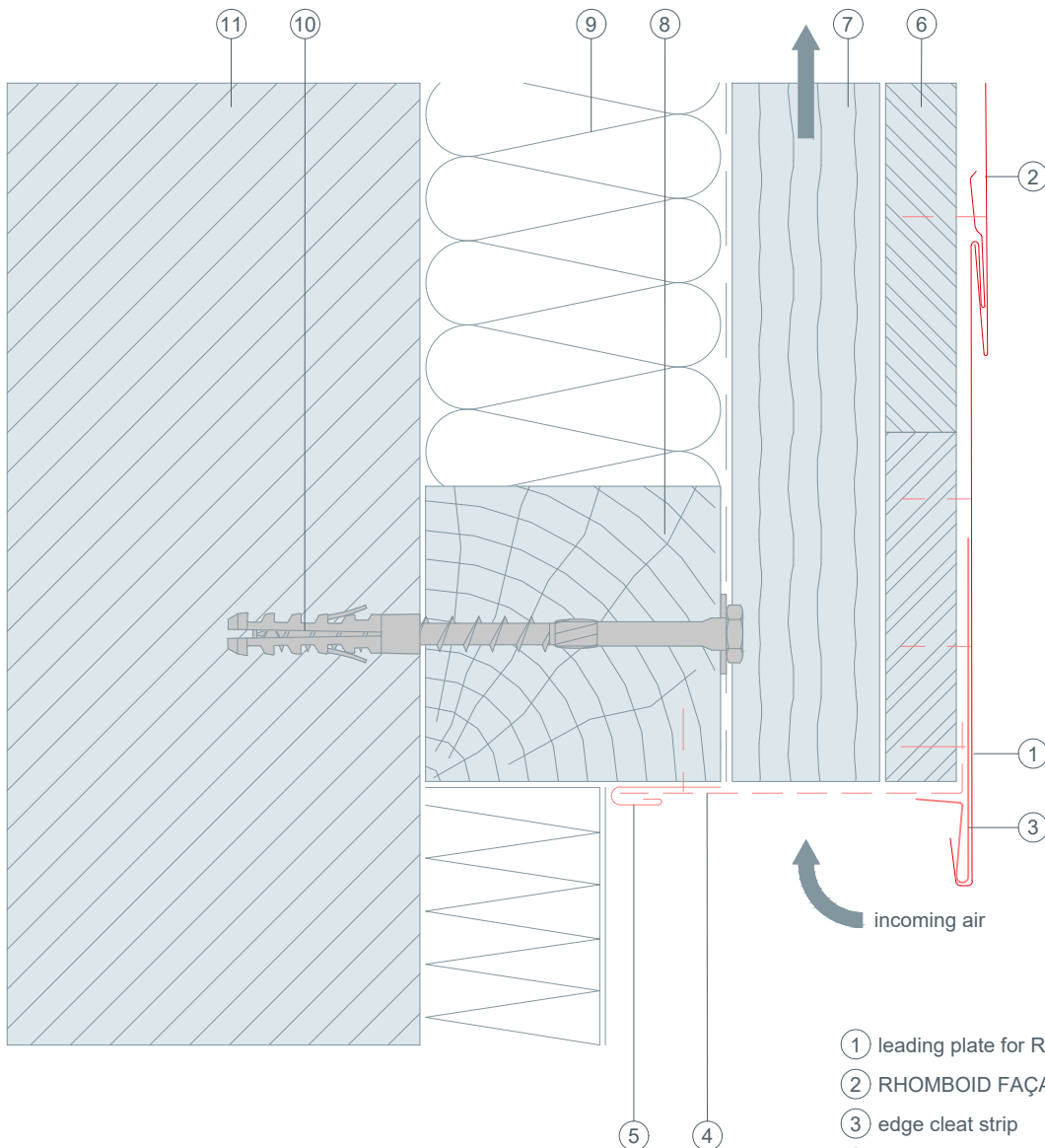
- ① RHOMBOID FAÇADE TILE 44 x 44 (PREFA)
- ② solid sheathing conforming to national guidelines
- ③ counter batten - ventilation gap
- ④ nogging piece
- ⑤ insulation
- ⑥ fastener driven into the supporting structure
- ⑦ structural substrate



STARK WIE EIN STIER

bottom connection vertical cross-section RHOMBOID FAÇADE TILE 44 x 44 (PREFA)

CAD DETAILS



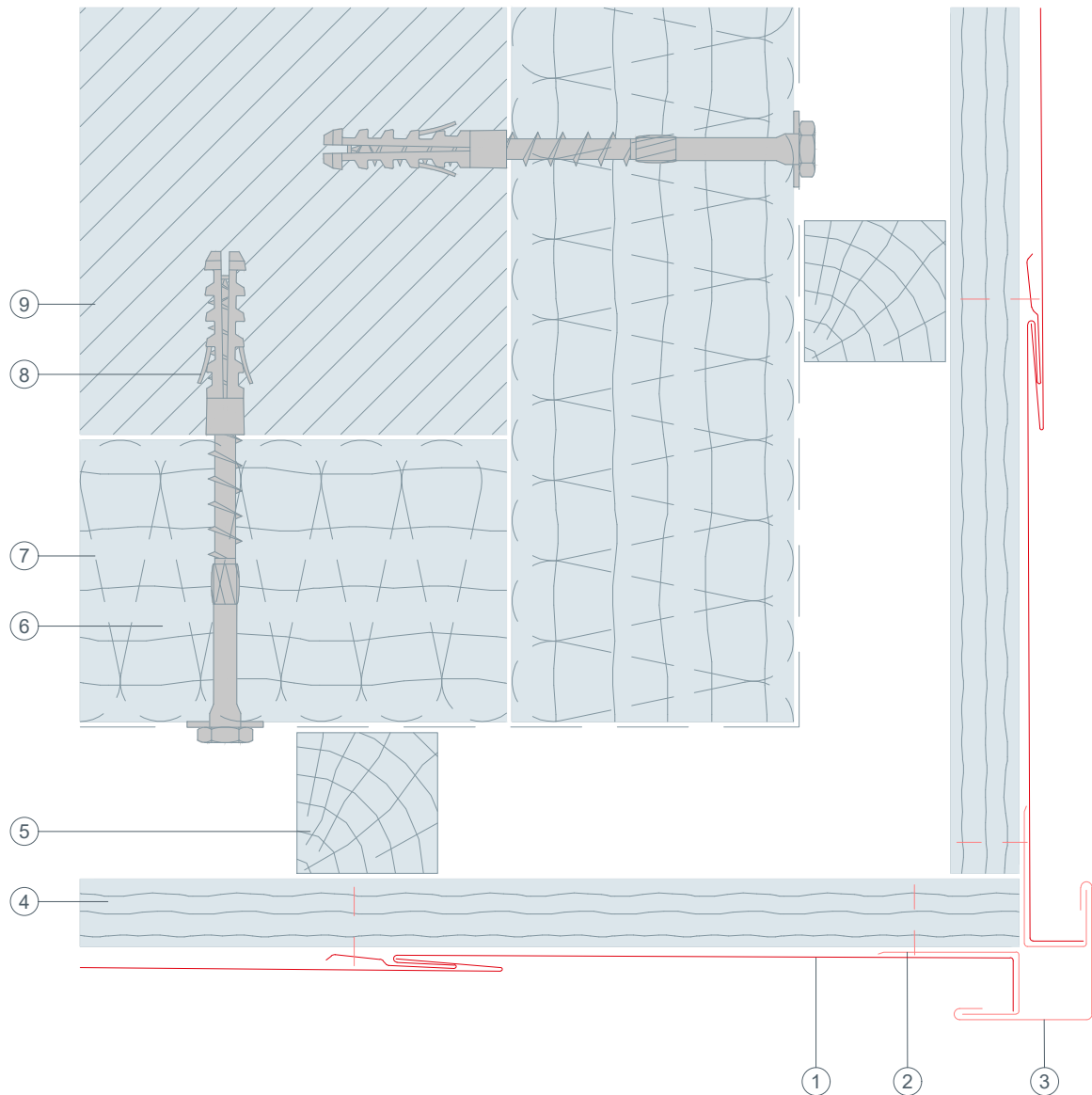
- ① leading plate for RHOMBOID FAÇADE TILE 44 x 44 (PREFA)
- ② RHOMBOID FAÇADE TILE 44 x 44 (PREFA)
- ③ edge cleat strip
- ④ perforated metal plate (canted)
- ⑤ insertion profile (PREFA)
- ⑥ solid sheathing conforming to national guidelines
- ⑦ counter batten - ventilation gap
- ⑧ nogging piece
- ⑨ insulation
- ⑩ fastener driven into the supporting structure
- ⑪ structural substrate



STARK WIE EIN STIER

external corner horizontal cross-section RHOMBOID FAÇADE TILE 44 x 44 (PREFA)

CAD DETAILS



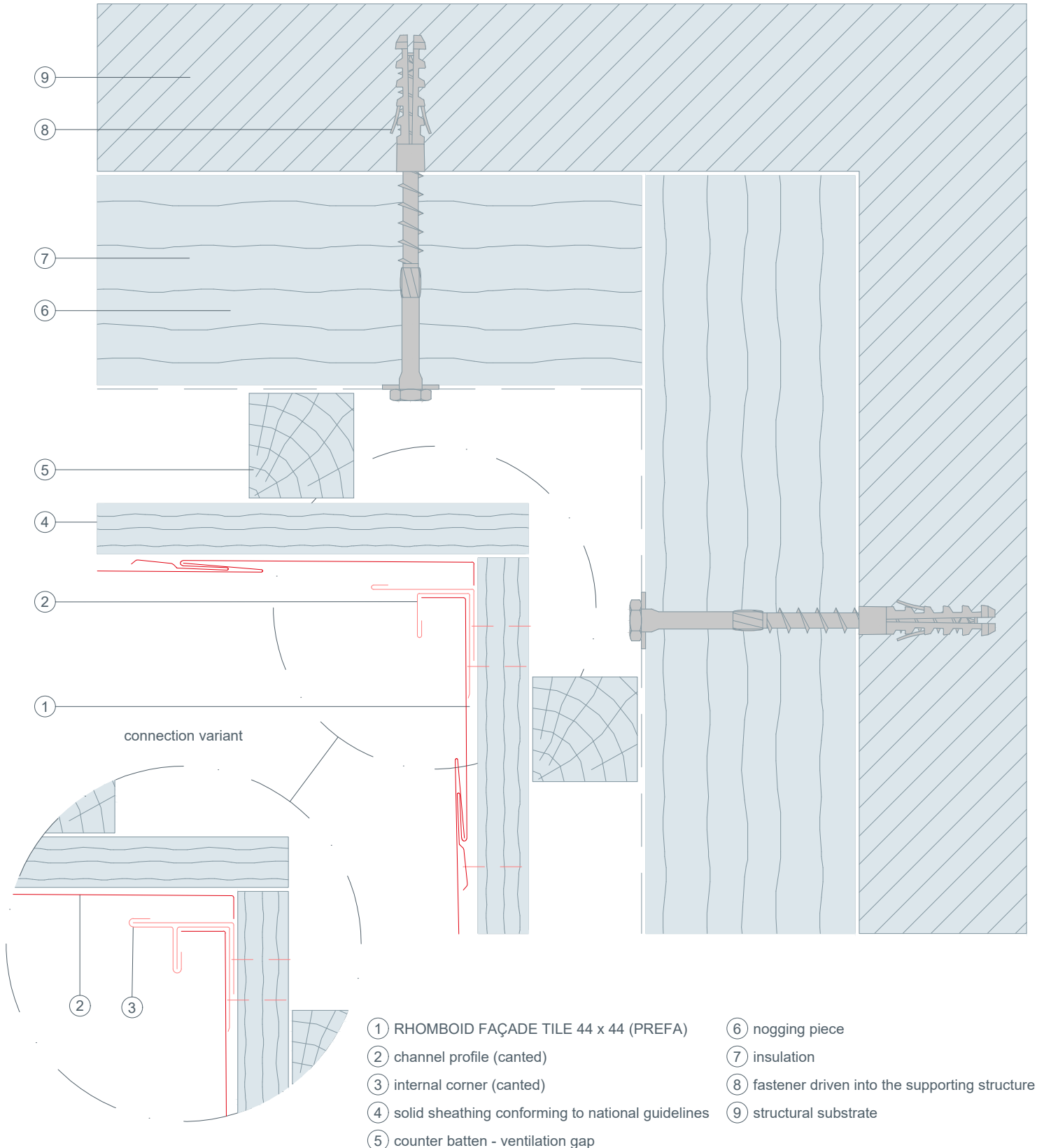
- ① RHOMBOID FAÇADE TILE 44 x 44 (PREFA)
- ② channel profile (canted)
- ③ external corner flashing
- ④ solid sheathing conforming to national guidelines
- ⑤ counter batten - ventilation gap
- ⑥ nogging piece
- ⑦ insulation
- ⑧ fastener driven into the supporting structure
- ⑨ structural substrate



STARK WIE EIN STIER

internal corner horizontal cross-section RHOMBOID FAÇADE TILE 44 x 44 (PREFA)

CAD DETAILS



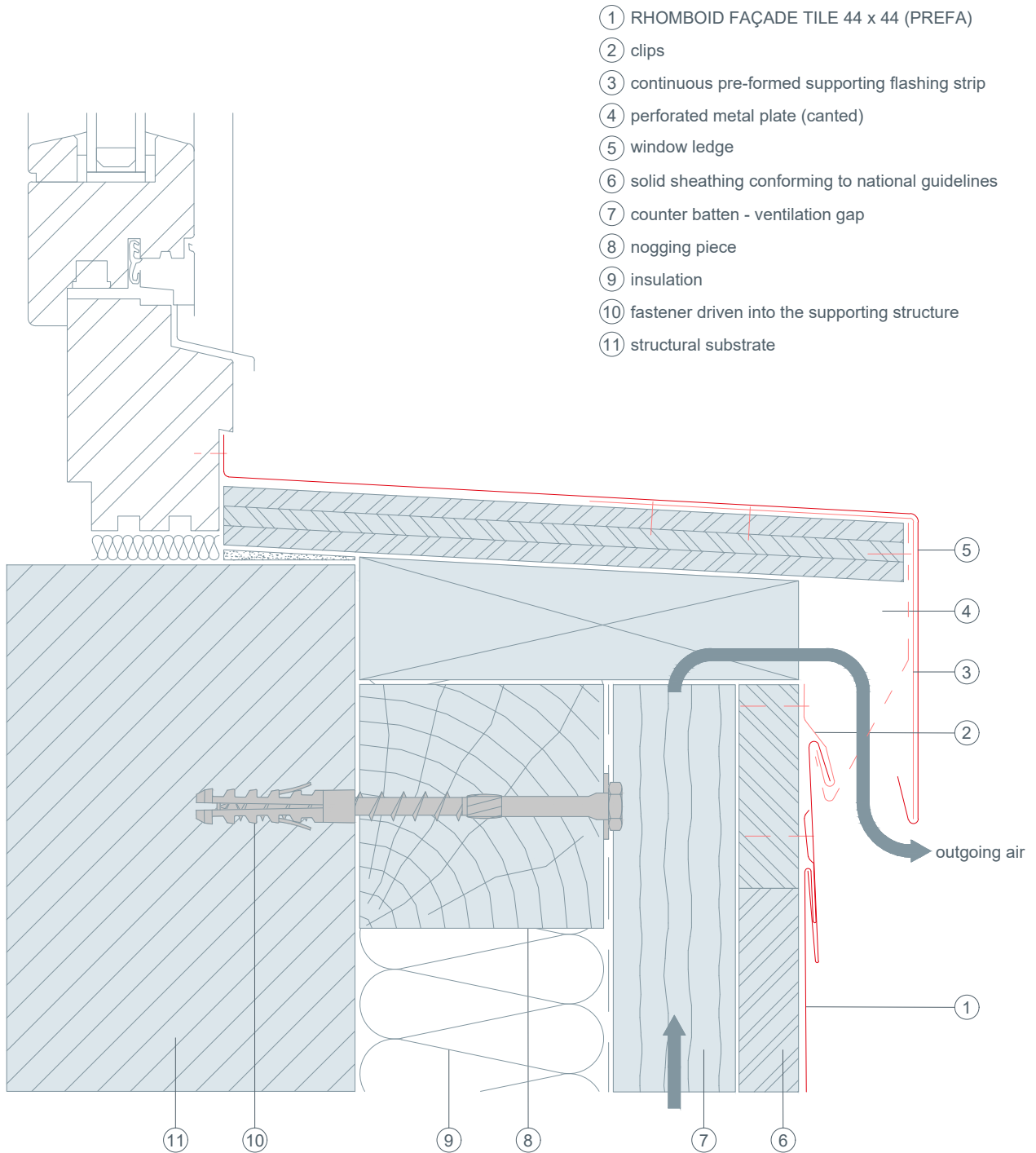
- | | |
|---|---|
| ① RHOMBOID FAÇADE TILE 44 x 44 (PREFA) | ⑥ nogging piece |
| ② channel profile (canted) | ⑦ insulation |
| ③ internal corner (canted) | ⑧ fastener driven into the supporting structure |
| ④ solid sheathing conforming to national guidelines | ⑨ structural substrate |
| ⑤ counter batten - ventilation gap | |



STARK WIE EIN STIER

window ledge vertical cross-section RHOMBOID FAÇADE TILE 44 x 44 (PREFA)

CAD DETAILS

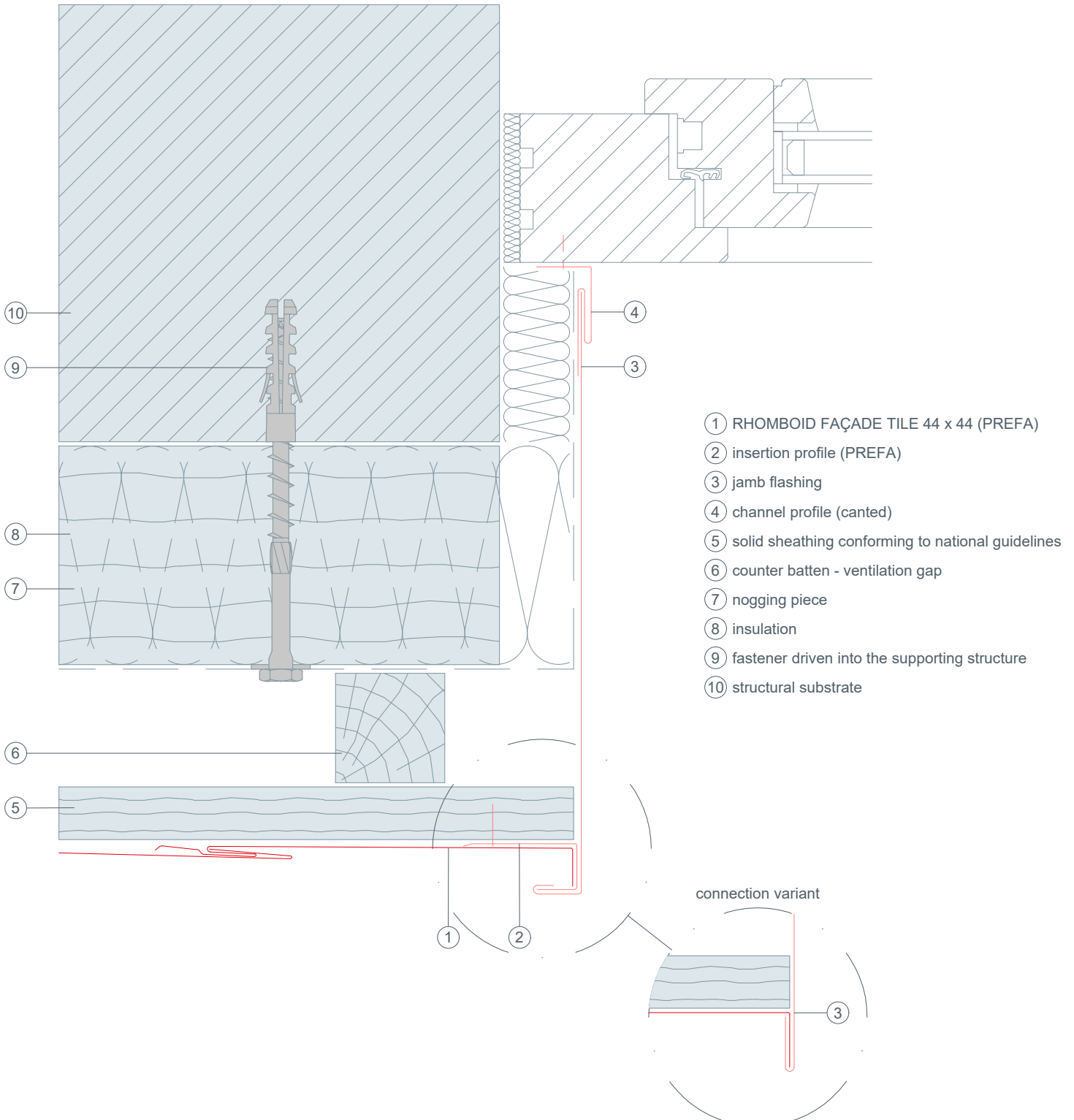




STARK WIE EIN STIER

window reveals horizontal cross-section RHOMBOID FAÇADE TILE 44 x 44 (PREFA)

CAD DETAILS

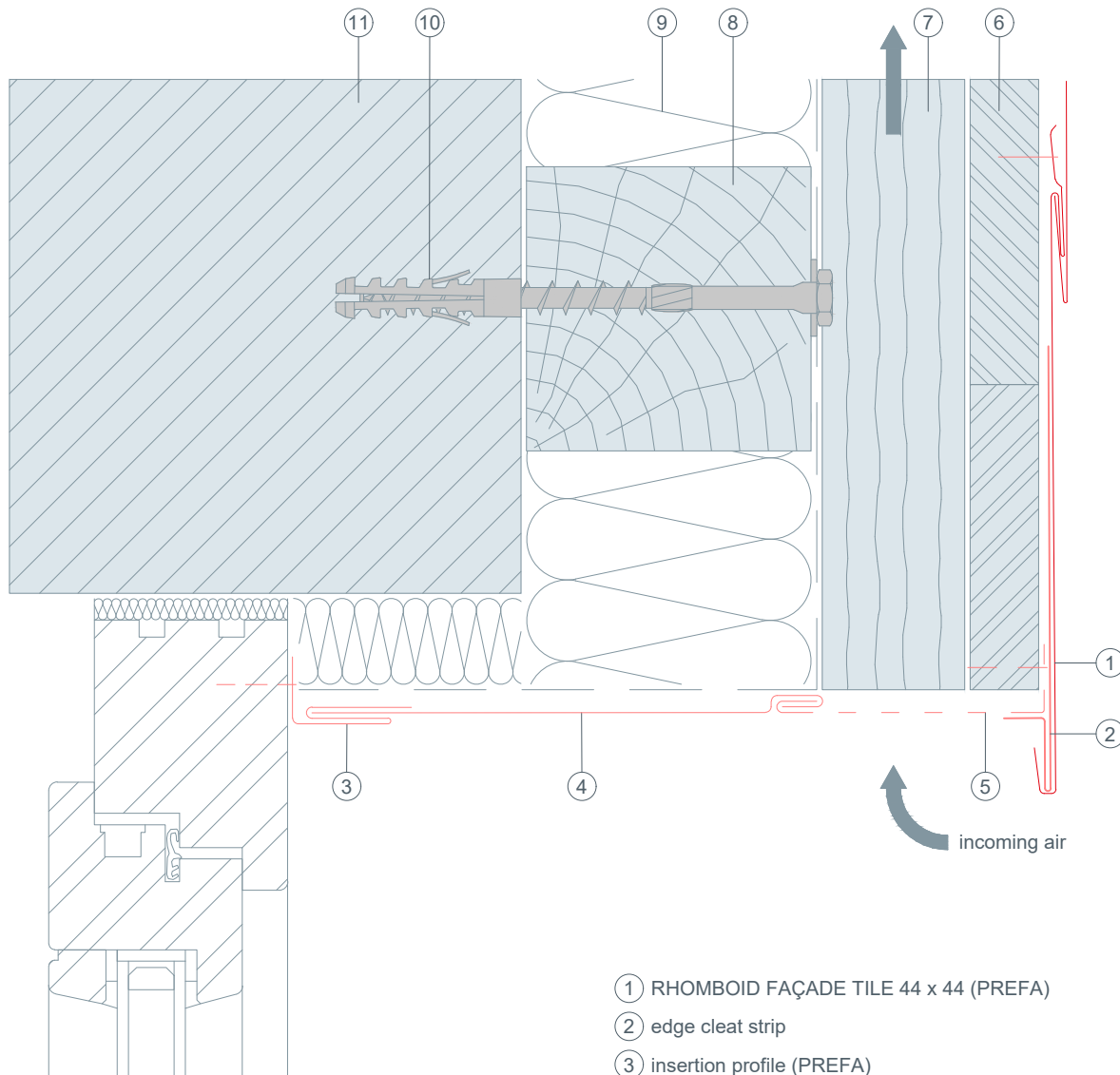




STARK WIE EIN STIER

vertical cross-section RHOMBOID FAÇADE TILE 44 x 44 (PREFA)

CAD DETAILS



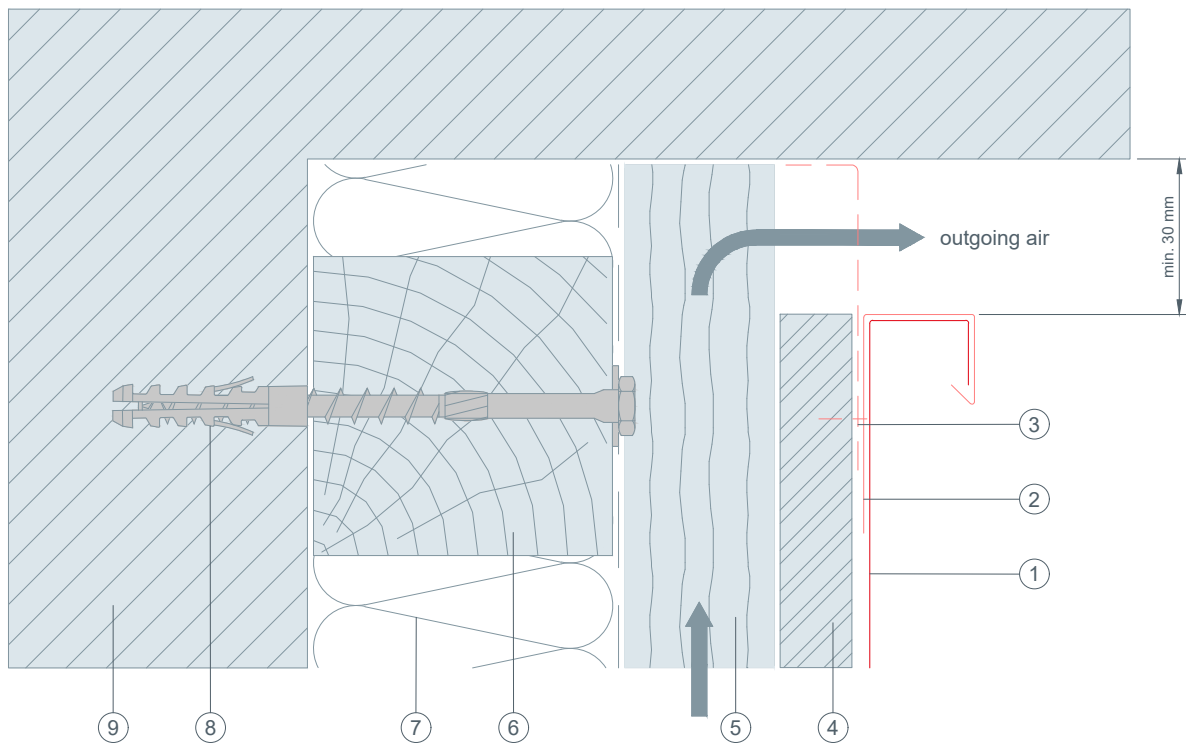
- ① RHOMBOID FAÇADE TILE 44 x 44 (PREFA)
- ② edge cleat strip
- ③ insertion profile (PREFA)
- ④ cover flashing
- ⑤ perforated metal plate (canted)
- ⑥ solid sheathing conforming to national guidelines
- ⑦ counter batten - ventilation gap
- ⑧ nogging piece
- ⑨ insulation
- ⑩ fastener driven into the supporting structure
- ⑪ structural substrate



STARK WIE EIN STIER

top connection vertical cross-section RHOMBOID FAÇADE TILE 44 x 44 (PREFA)

CAD DETAILS



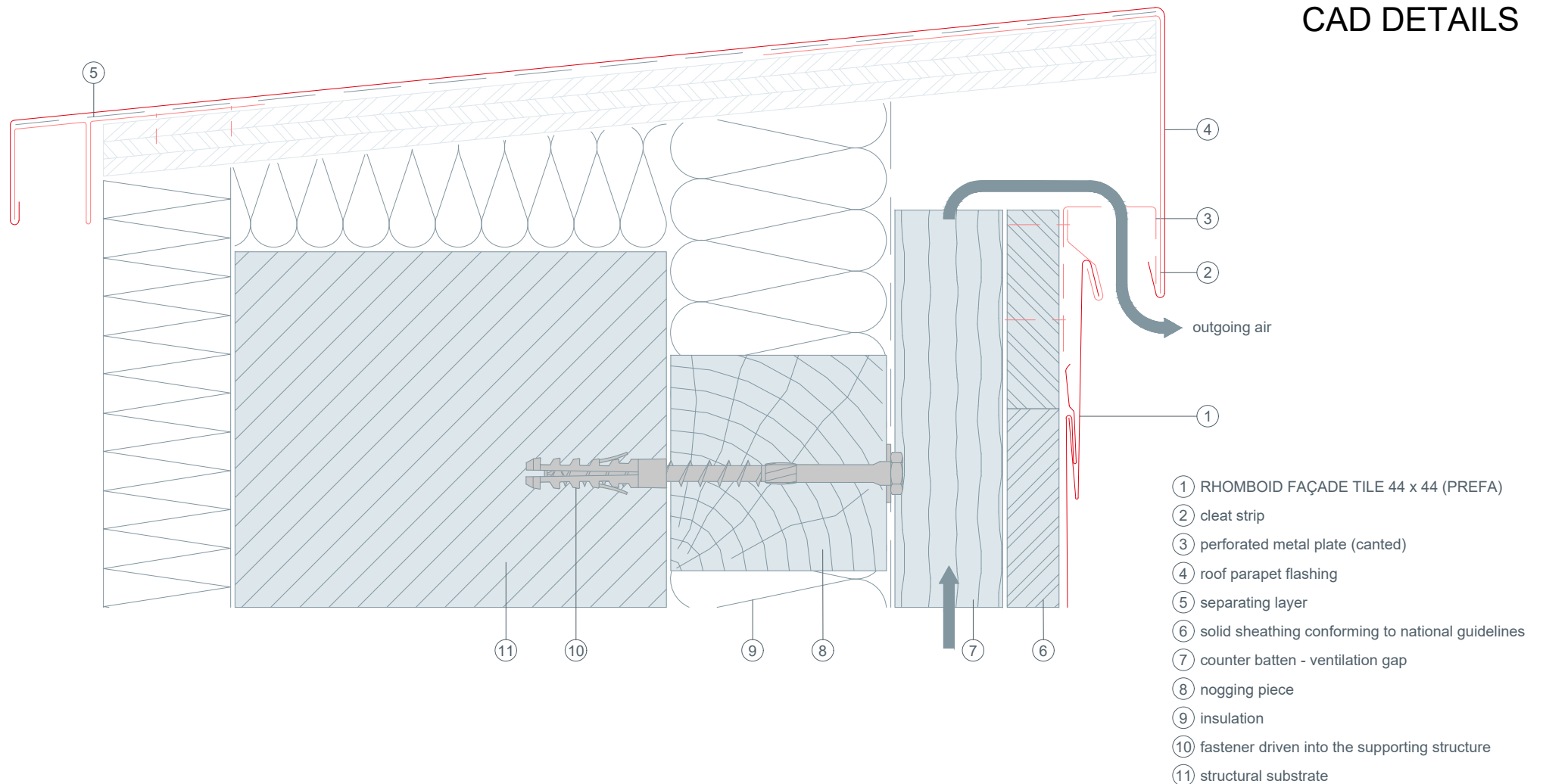
- ① RHOMBOID FAÇADE TILE 44 x 44 (PREFA)
- ② channel profile (canted)
- ③ perforated metal plate (canted)
- ④ solid sheathing conforming to national guidelines
- ⑤ counter batten - ventilation gap
- ⑥ nogging piece
- ⑦ insulation
- ⑧ fastener driven into the supporting structure
- ⑨ structural substrate



STARK WIE EIN STIER

roof parapet vertical cross-section RHOMBOID FAÇADE TILE 44 x 44 (PREFA)

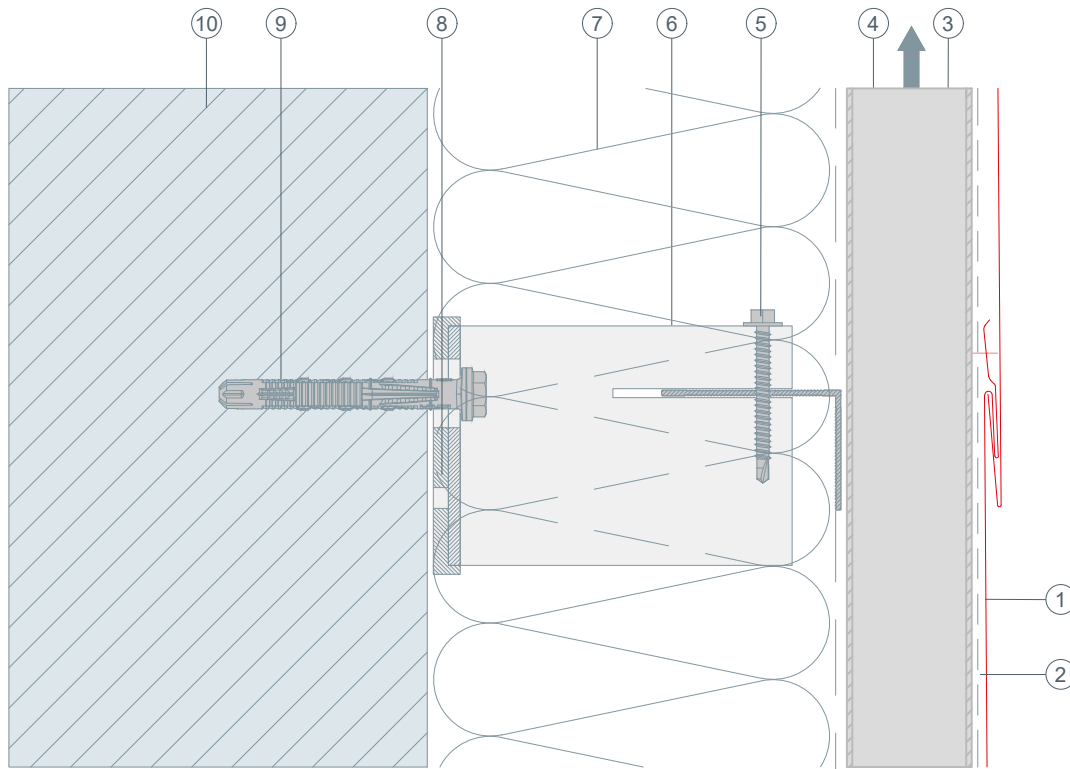
CAD DETAILS





STARK WIE EIN STIER

structure vertical cross-section RHOMBOID FAÇADE TILE 44 x 44 (PREFA)

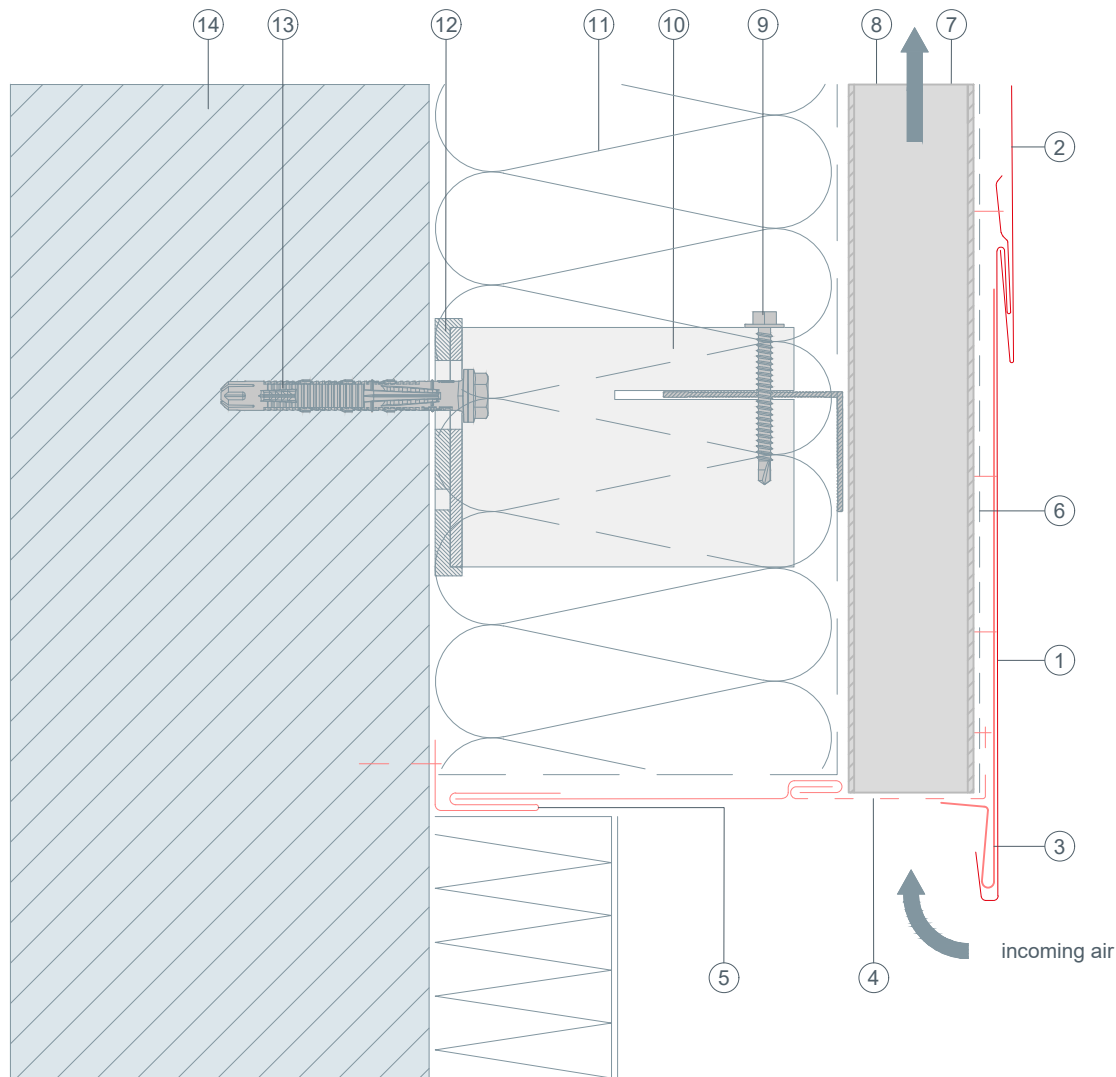


- ① RHOMBOID FAÇADE TILE 44 x 44 (PREFA)
- ② separating layer
- ③ trapezoidal sheet
- ④ ventilation gap
- ⑤ connection screw
- ⑥ spacer bracket
- ⑦ insulation
- ⑧ thermal break
- ⑨ fastener driven into the supporting structure
- ⑩ structure substrate



STARK WIE EIN STIER

bottom connection vertical cross-section RHOMBOID FAÇADE TILE 44 x 44 (PREFA)

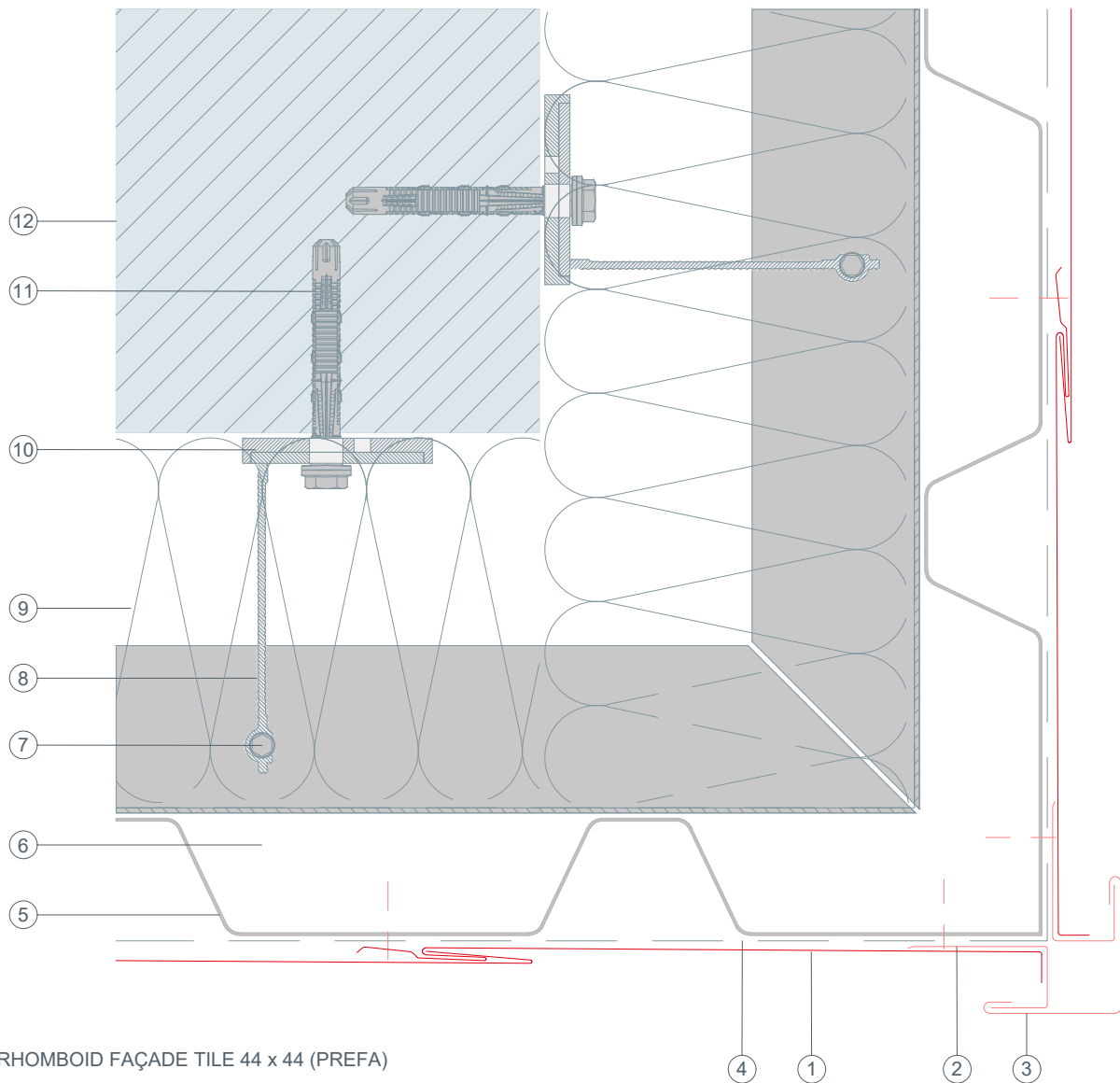


- ① leading plate for RHOMBOID FAÇADE TILE 44 x 44 (PREFA)
- ② RHOMBOID FAÇADE TILE 44 x 44 (PREFA)
- ③ edge cleat strip
- ④ perforated metal plate (canted)
- ⑤ insertion profile (PREFA)
- ⑥ separating layer
- ⑦ trapezoidal sheet
- ⑧ ventilation gap
- ⑨ connection screw
- ⑩ spacer bracket
- ⑪ insulation
- ⑫ thermal break
- ⑬ fastener driven into the supporting structure
- ⑭ structural substrate



STARK WIE EIN STIER

external corner horizontal cross-section RHOMBOID FAÇADE TILE 44 x 44 (PREFA)

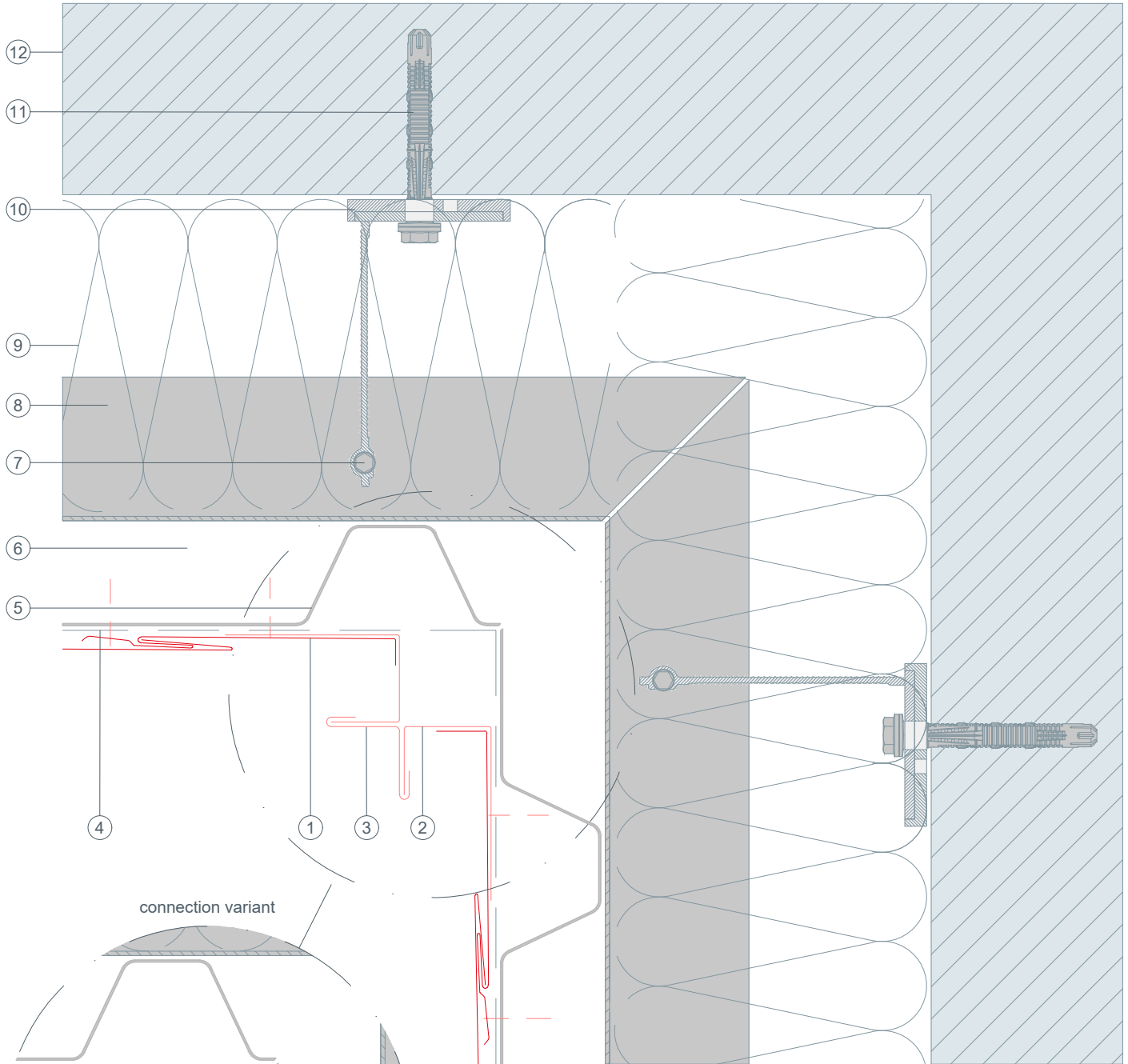


- ① RHOMBOID FAÇADE TILE 44 x 44 (PREFA)
- ② channel profile (canted)
- ③ external corner flashing
- ④ separating layer
- ⑤ trapezoidal sheet
- ⑥ ventilation gap
- ⑦ connection screw
- ⑧ spacer bracket
- ⑨ insulation
- ⑩ thermal break
- ⑪ fastener driven into the supporting structure
- ⑫ structural substrate



STARK WIE EIN STIER

internal corner horizontal cross-section RHOMBOID FAÇADE TILE 44 x 44 (PREFA)



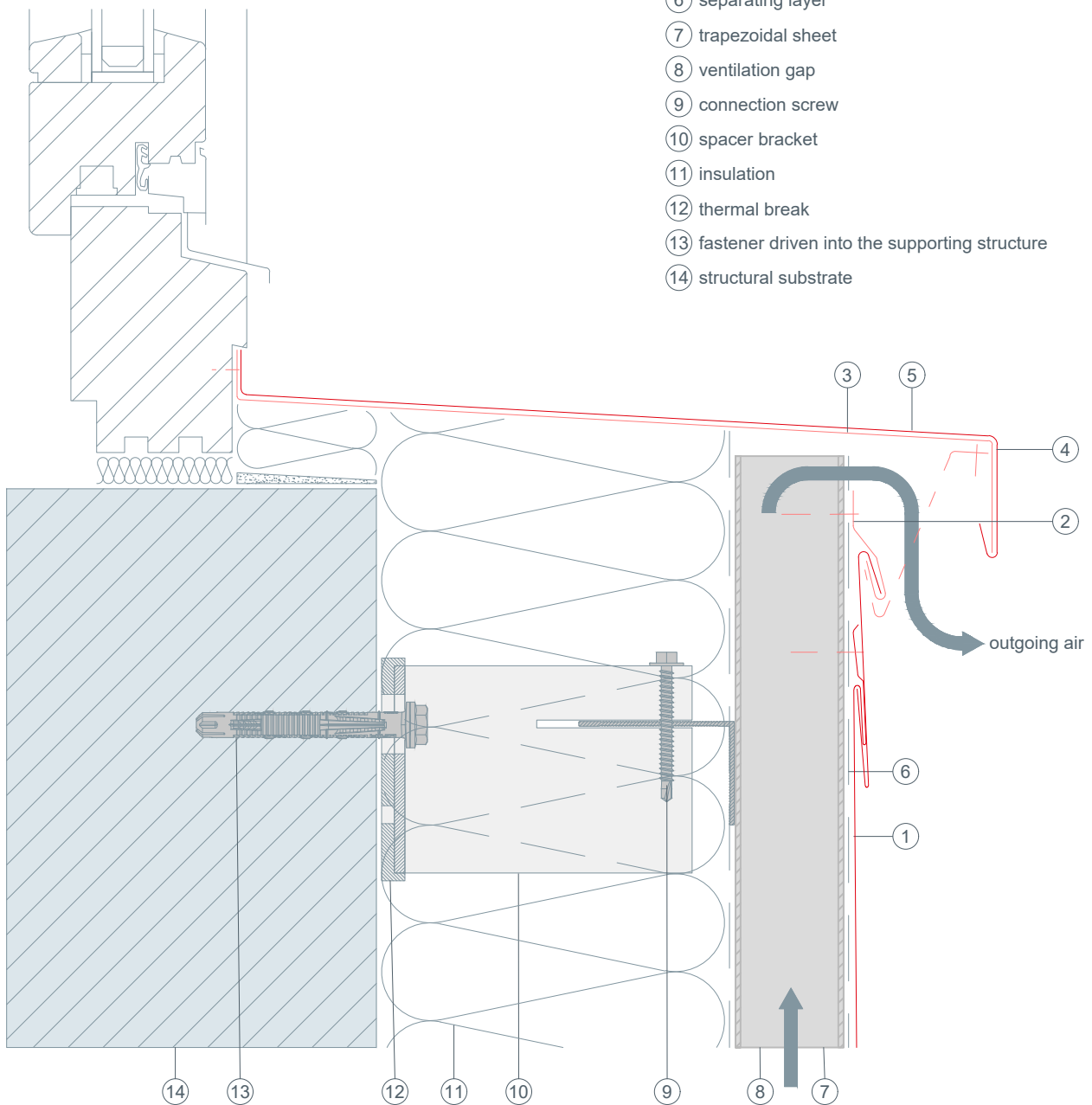
- | | |
|--|---|
| ① RHOMBOID FAÇADE TILE 44 x 44 (PREFA) | ⑦ connection screw |
| ② channel profile (canted) | ⑧ spacer bracket |
| ③ internal corner (canted) | ⑨ insulation |
| ④ separating layer | ⑩ thermal break |
| ⑤ trapezoidal sheet | ⑪ fastener driven into the supporting structure |
| ⑥ ventilation gap | ⑫ structural substrate |



STARK WIE EIN STIER

window ledge vertical cross-section RHOMBOID FAÇADE TILE 44 x 44 (PREFA)

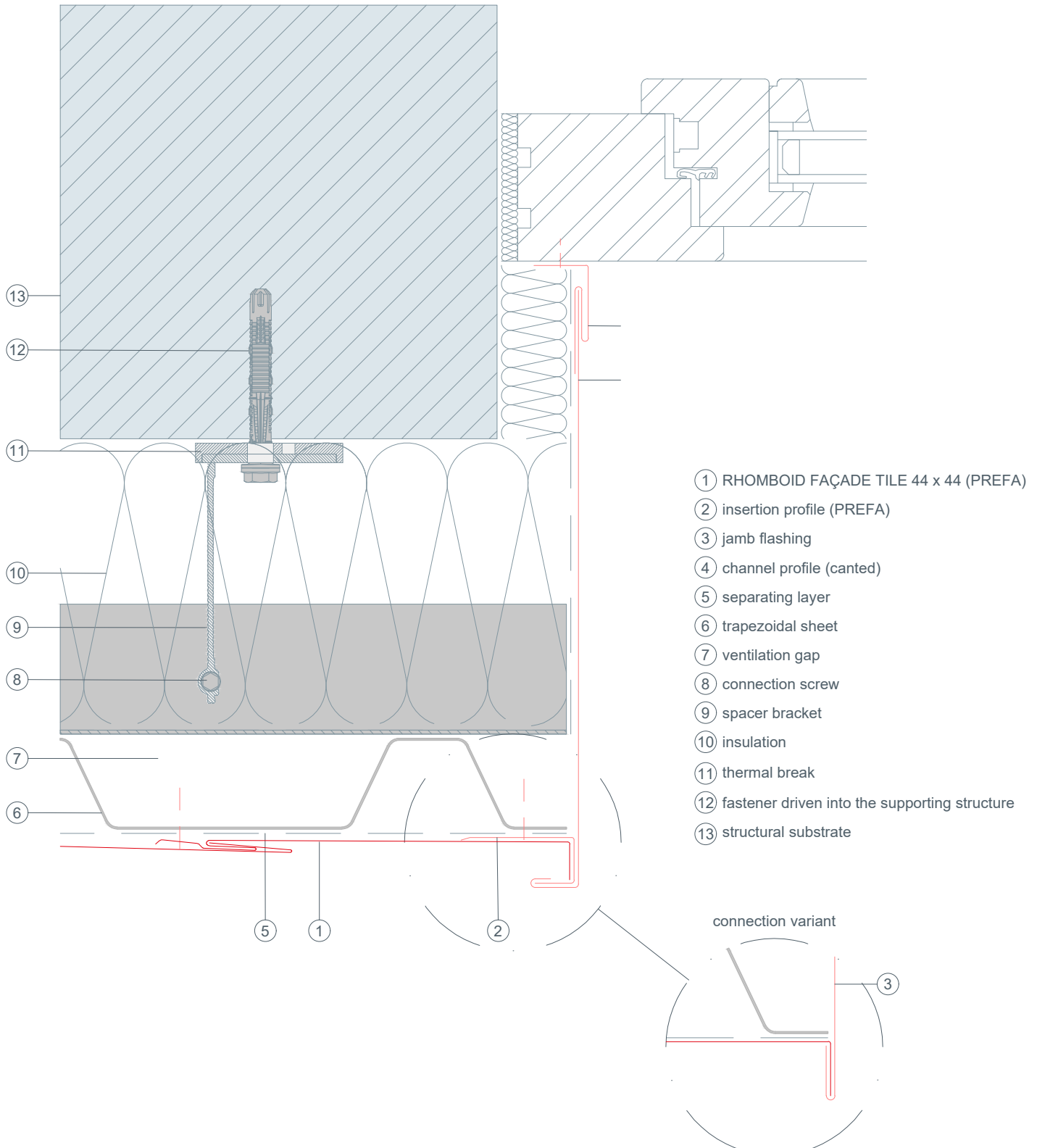
- ① RHOMBOID FAÇADE TILE 44 x 44 (PREFA)
- ② clips
- ③ continuous pre-formed supporting flashing strip
- ④ perforated metal plate (canted)
- ⑤ window ledge
- ⑥ separating layer
- ⑦ trapezoidal sheet
- ⑧ ventilation gap
- ⑨ connection screw
- ⑩ spacer bracket
- ⑪ insulation
- ⑫ thermal break
- ⑬ fastener driven into the supporting structure
- ⑭ structural substrate





STARK WIE EIN STIER

window reveals horizontal cross-section RHOMBOID FAÇADE TILE 44 x 44 (PREFA)

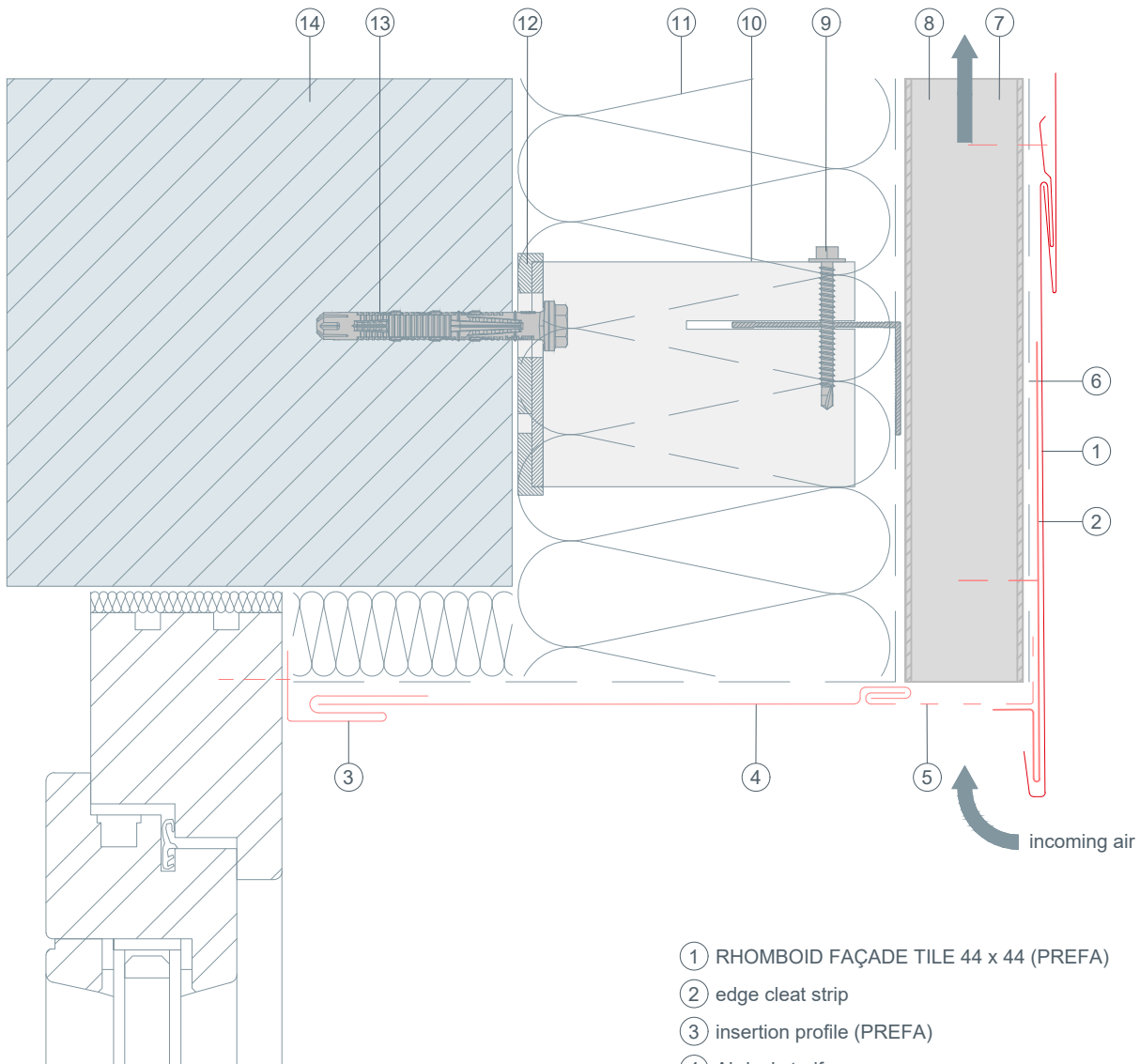




STARK WIE EIN STIER

window lintel vertical cross-section RHOMBOID FAÇADE TILE 44 x 44 (PREFA)

CAD DETAILS



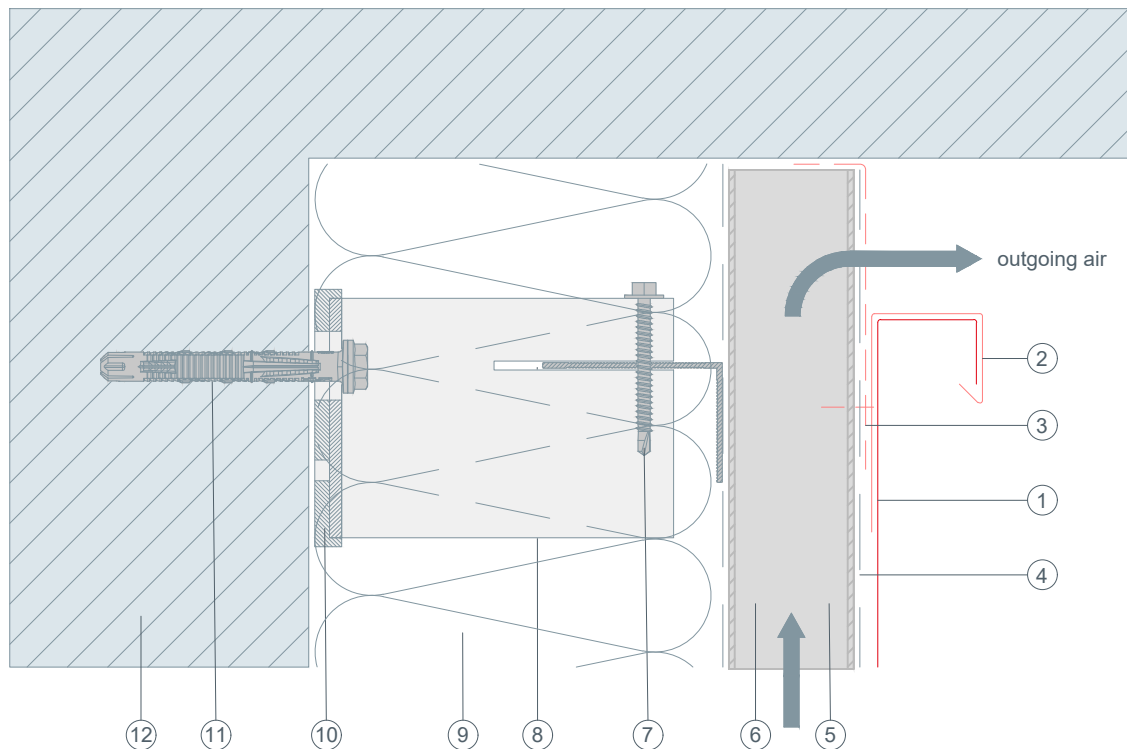
- ① RHOMBOID FAÇADE TILE 44 x 44 (PREFA)
- ② edge cleat strip
- ③ insertion profile (PREFA)
- ④ Abdeckstreifen
- ⑤ perforated metal plate (canted)
- ⑥ separating layer
- ⑦ trapezoidal sheet
- ⑧ ventilation gap
- ⑨ connection screw
- ⑩ spacer bracket
- ⑪ insulation
- ⑫ thermal break
- ⑬ fastener driven into the supporting structure
- ⑭ structural substrate



STARK WIE EIN STIER

top connection vertical cross-section RHOMBOID FAÇADE TILE 44 x 44 (PREFA)

CAD DETAILS



- ① RHOMBOID FAÇADE TILE 44 x 44 (PREFA)
- ② channel profile (canted)
- ③ perforated metal plate (canted)
- ④ separating layer
- ⑤ trapezoidal sheet
- ⑥ ventilation gap
- ⑦ connection screw
- ⑧ spacer bracket
- ⑨ insulation
- ⑩ thermal break
- ⑪ fastener driven into the supporting structure
- ⑫ structural substrate



STARK WIE EIN STIER

roof parapet vertical cross-section RHOMBOID FAÇADE TILE 44 x 44 (PREFA)

CAD DETAILS

